

This document describes how to install the NLP-5x ZView development tools. It assumes the user is familiar with installing Windows based programs and hardware drivers.

The package should consist of a sheet which contains a web link to the installation files, and either a ZView license USB dongle or a ZSP-USB-JTAG debug probe. The probe serves as a ZView license as well as a debug tool. For the purposes of this discussion, probe and dongle are used interchangeably.

The web link contains the following files (in addition to this one)

1. The ZViewIDE installer (file version.x.y.z).zip (At the time of this writing, the version is 3.2.0) **NOTE:** The screenshots in this document show the path to an earlier version (3.1.1) of the ZViewIDE.
2. There may be a patch file to correct bugs in the current ZView release. The name will be similar to the patch file at the time of this writing: (patch3_2_0r5_win_20090709.zip)
3. The dongle usb driver (ZSPUSBInstall.zip)
4. Your dongle's license file (name.lic)

IMPORTANT NOTE: The current version of the ZView USB drivers does not support 64-bit Windows. Make sure you are installing on a machine with a 32-bit operating system.

First, verify that the license file name includes the serial number of the actual dongle. The dongle serial number will be marked on the device. Don't insert the dongle yet.

I. Installing the files:

If the numbers don't match, contact Sensory immediately at zviewlicense@sensoryinc.com.

Otherwise, unzip the ZView file to a temporary folder on your H.D. and run the ZView setup program. It will suggest that you install to c:\ZSP. We recommend you follow that suggestion. The rest of this discussion will assume that path. After the installation completes, you may be prompted to reboot. Please do so.

Next, unzip and follow the readme instructions in the patch zip file. The zip file will contain a .msi executable which will determine which ZView modules need to be updated, and then perform the update.

You should find that ZView has added 2 icons to your desktop, one named ZSPIDE, and the other "ZViewIDE".

IMPORTANT NOTE: Do not use the ZSPIDE. It is not covered by the license.

Once again, you may be prompted to reboot.

After the reboot, and depending on the ZView release version, you may need to install the ZView USB drivers. Check if the ZView folder contains a C:\ZSP\USBdrivers folder. This folder should contain 2 files, "dtusbdev.inf", and "dtusbdev.sys".

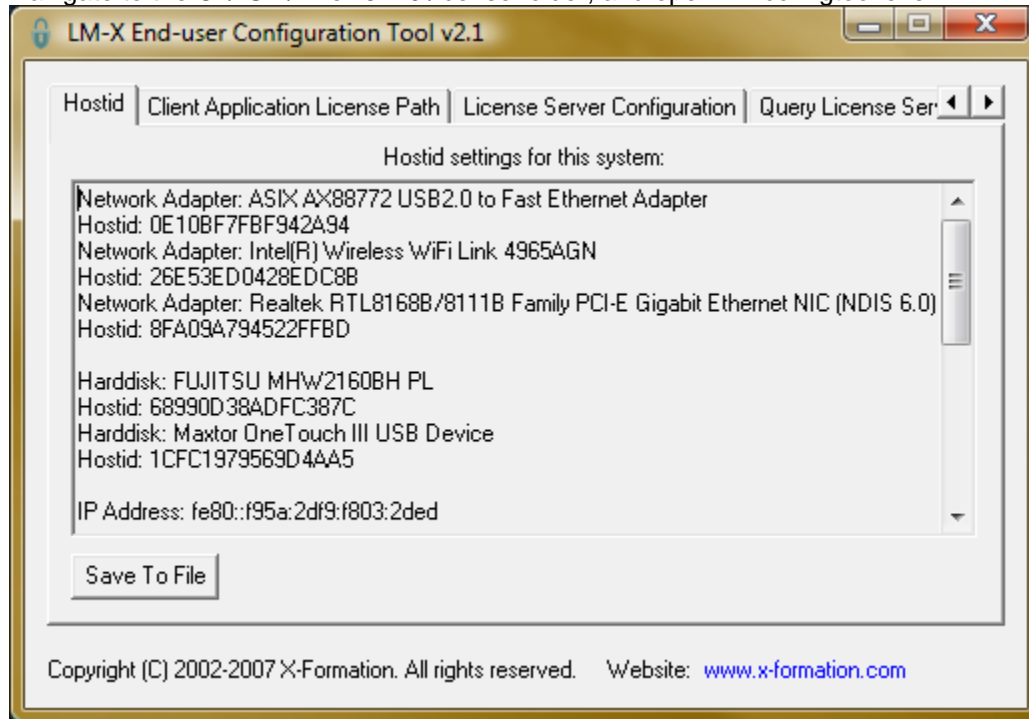
If the folder or files do not exist, proceed to unzip the ZSPUSBInstall driver file, and run the enclosed .msi file. You may get a window warning that the file is not certified by Microsoft. Continue with the installation anyway. When it completes, you should find the C:\ZSP\USBdrivers folder, which contains the drivers.

Insert the dongle into a USB port. If Windows prompts to install the drivers and cannot find the location, browse to the C:\ZSP\USBdrivers folder.

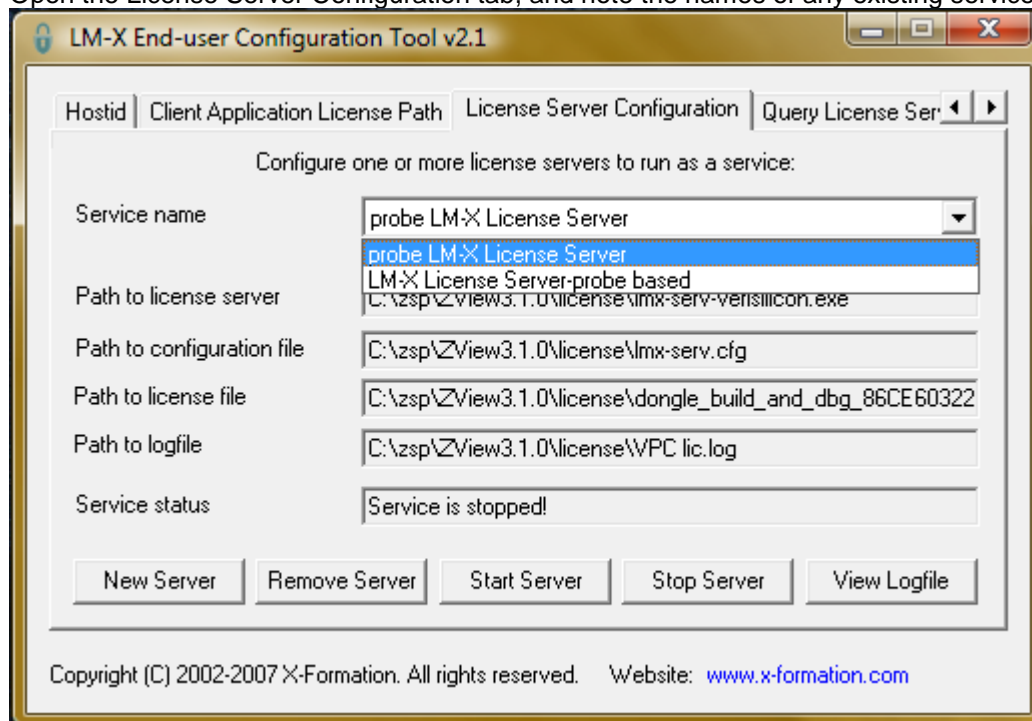
II. Setting up the license:

Copy the license file to a convenient location on your computer. We suggest C:\ZSP, the root folder for the ZView application.

Navigate to the C:\ZSP\ZView3.2.0\license folder, and open lmxconfigtool.exe.



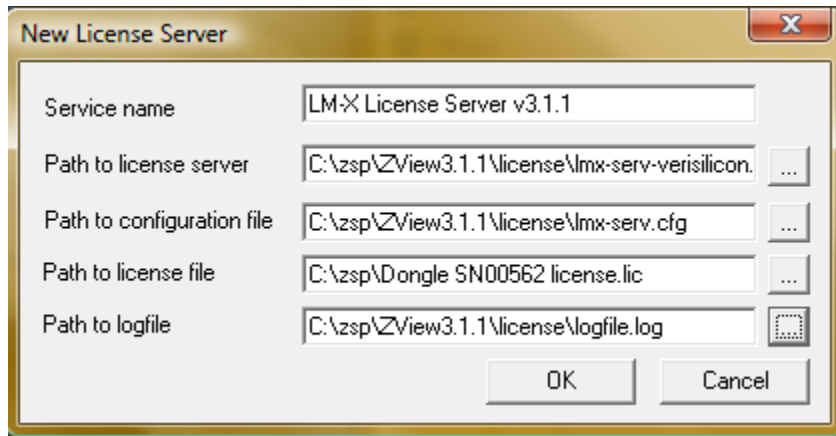
Open the License Server Configuration tab, and note the names of any existing services.



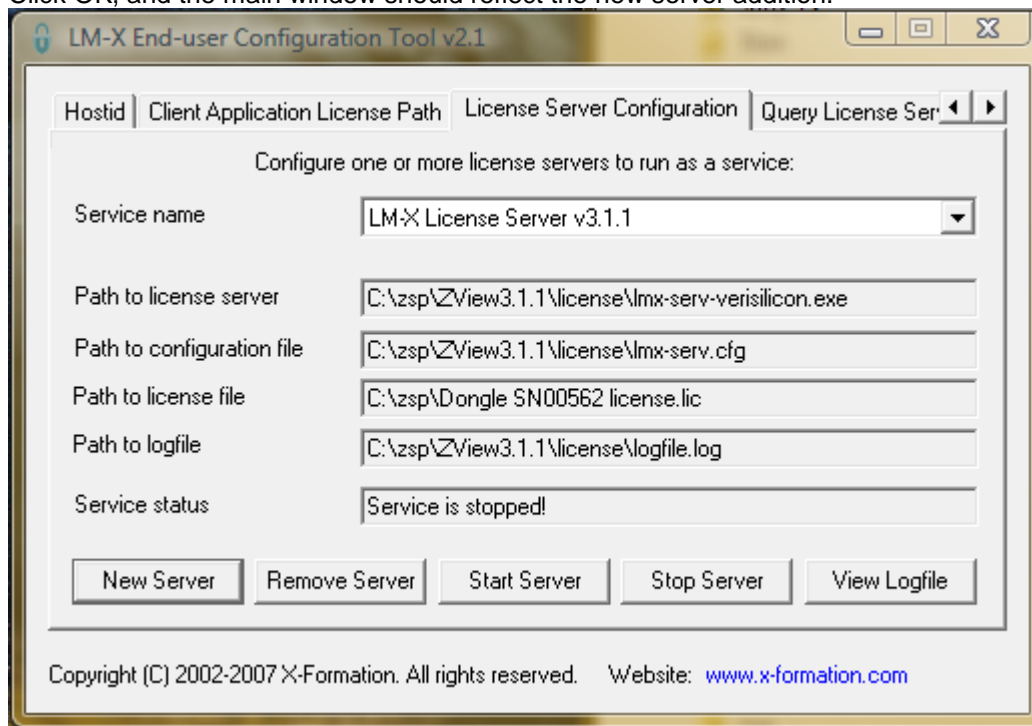
Click on the New Server button and fill in the fields. You can fill them in manually, or navigate to the C:\ZSP\ZView3.1.1\license folder and select the files (except the license file, if it resides in c:\ZSP).

If you've followed our setup path recommendations, the following are the correct fields:

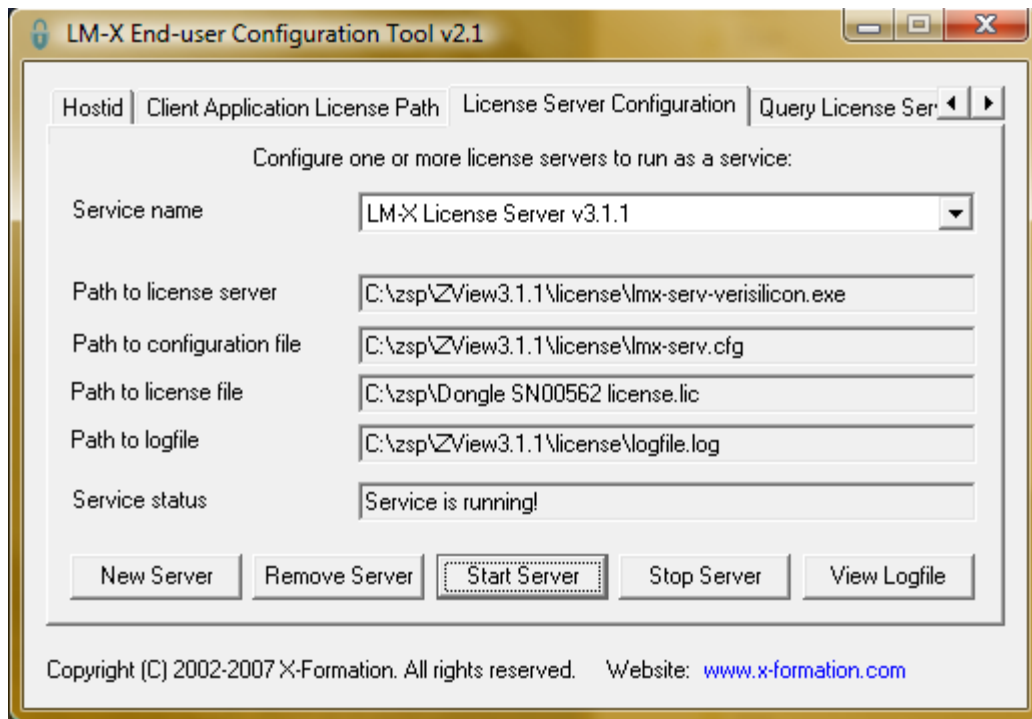
- Path to license server = C:\zsp\ZView3.2.0\license\lmserv-verisilicon.exe
- Path to configuration file = C:\zsp\ZView3.2.0\license\lmserv.cfg
- Path to license file = C:\zsp\your_license_filename.lic
- Path to logfile = path and preferred name of your log file



Click OK, and the main window should reflect the new server addition.



Click Start Server, and if all went well, the service status should reflect that it's running.



A cautionary note: The license configuration tool supports multiple licenses. If there is a preexisting service, it is possible that the tool will start the wrong one, with an incorrect license. If you don't need the other license, we suggest removing the unneeded one by selecting that service and click Remove Server.

Close the configuration tool. You should now be able to open your ZViewIDE and start writing and compiling code.

The Interactive Speech™ Product Line

Sensory's **Interactive Speech™** product line makes consumer electronics more intelligent by enabling them to talk, hear, move and interact with the external world using naturally sounding spoken commands—all without training and even in noisy environments! Sensory offers both chip and software solutions that offer advanced speech recognition with hands-free functionality, biometric speaker verification, text-to-speech (TTS) synthesis, high quality stereo music and sound effects, robotics and LCD controls, and interactive sensing capabilities. These technologies are designed for integration into cost-sensitive consumer electronic applications such as home appliances, smart toys, music players and personal communication devices. The hardware line includes the NLP-5x Natural Language Processor, the RSC-4x family of mixed signal processors, and the SC-691 music and speech synthesis slave processor. Embedded software options include the FluentSoft™ Recognizer, which offers speech recognition technologies for non-Sensory processors and DSPs. Sensory's BlueGenie™ Voice Interface, the first speech recognition, TTS and synthesis option for *BlueTooth®* enabled devices, offers hands-free control of headsets, music players and other *BlueTooth®* devices.

NLP-5x Natural Language Processor and Development Tools

The NLP-5x features a high-performance 80MHz 16-bit DSP with on-chip ADC, hi-fidelity stereo DAC, microphone preamplifiers, RAM, OTP code and constant memory, and many kinds of peripheral interfaces and control blocks. With Sensory's FluentChip™ 5 firmware, it provides a single chip solution capable of accurate speech recognition; text-to-speech (TTS) synthesis with morphing; compressed speech; high fidelity music; motor and LCD control; and man-machine interfaces (MMI) with interactive sensors. Sensory offers a complete suite of evaluation and development tools that include the ability to create complex grammars with a natural language interface in multiple languages.

RSC-4x Family of Microcontrollers and Developer Tools

The RSC-4x (**Recognition, Synthesis and Control**) product family contains low-cost 8-bit speech-optimized microcontrollers that are fully integrated and include A/D, pre-amplifier, D/A, RAM, and ROM circuitry. With Sensory's FluentChip™ firmware, the RSC family offers speech recognition, speaker verification, speech and music synthesis, voice recording and playback, and an entire suite of interactive robotic and sonic networking technologies. The family is supported by a complete suite of evaluation and development toolkits that include the ability to quickly create speaker independent recognition sets in many languages.

SC6 Slave Processor and Tools

The SC-691 is a standard slave synthesizer that accepts compressed speech data from other microprocessors or microcontrollers and converts it to speech. The chip operates up to 12.32 MIPS, and provides high-quality, low data-rate speech compression and MIDI music synthesis, with unlimited speech duration using external memory. Sensory offers hardware and software tools for analyzing speech files, editing speech data and generating coded speech.

FluentSoft™ Recognizer

The FluentSoft™ Recognizer is the engine powering the FluentSoft™ SDK. It provides a noise-robust, large-vocabulary, speaker-independent solution with continuous digit recognition and word-spotting capabilities. This small-footprint software recognizes thousands of words and runs on non-Sensory processors including Intel XScale, TI OMAP, and ARM9, and supports operating systems such as MS Windows, Linux, and Symbian.

BlueGenie™ Voice Interface

The BlueGenie Voice Interface software suite runs on CSR's BC-5 MM Kalimba DSP, and enables manufacturers of *Bluetooth* products to integrate full voice control and synthetic speech output without the need for visual displays or complex user interfacing. It frees designers to pack functionality onto small form factor *Bluetooth* devices and answers consumer demand for a "Truly Hands-Free" experience.

Important notices:

Sensory Incorporated (Sensory, Inc.) reserves the right to make changes, without notice, including circuits, standard cells, and/or software, described or contained herein in order to improve design and/or performance. Sensory, Inc. assumes no responsibility nor liability for the use of any of these products, conveys no license or title under any patent, copyright, or mask-work right to these products, and makes no representations or warranties that these products are free from patent, copyright, or mask-work right infringement, unless otherwise specified. Applications that are described herein for any of these products are for illustrative purposes only. Sensory, Inc. makes no representation or warranty that such applications will be suitable for the specified use without further testing or modification.

Safety Policy:

Sensory, Inc. products are not designed for use in any systems where malfunction of a Sensory, Inc. product can reasonably be expected to result in a personal injury, including but not limited to life support appliances and devices. Sensory, Inc. customers using or selling Sensory Incorporated products for use in such applications do so at their own risk and agree to fully indemnify Sensory, Inc. for any damages resulting from such improper use or sale.



575 N. Pastoria Ave., Sunnyvale, CA 94085
Tel: (408) 625-3300 Fax: (408) 625-3350

© 2010 SENSORY, INC. ALL RIGHTS RESERVED.
Sensory is registered by the U.S. Patent and Trademark Office.
All other trademarks or registered trademarks are the property of
their respective owners.

www.sensoryinc.com